



15 Freeman Close, Castle Hill, Ebbsfleet Valley, Swanscombe, DA10 1BY
£3,000 Per month



15 Freeman Close, Castle Hill, Ebbsfleet Valley, Swanscombe, DA10 1BY

£3,000 Per month

Nestled in the charming Freeman Close, within the desirable Castle Hill area of Ebbsfleet Valley, this stunning detached house offers a perfect blend of modern living and comfort. Built in 2020, the property boasts a contemporary design that is both stylish and functional, making it an ideal family home.

Upon entering, you are greeted by two spacious reception rooms, providing ample space for relaxation and entertaining guests. The well-appointed layout ensures that each room flows seamlessly into the next, creating an inviting atmosphere throughout. The heart of the home is undoubtedly the generous kitchen, which is perfect for culinary enthusiasts and family gatherings alike.

This delightful residence features four well-proportioned bedrooms, each designed to offer a peaceful retreat at the end of the day. The two bathrooms are thoughtfully designed, providing convenience and privacy for the entire family.

The location of this property is particularly appealing, situated in a vibrant community with excellent transport links and local amenities. Residents can enjoy the benefits of nearby parks and recreational areas, making it a wonderful place for families and individuals alike.

In summary, this modern detached house in Freeman Close is a fantastic opportunity for those seeking a stylish and spacious home in a thriving area.

Description

Modern family home with four double bedrooms, two bathrooms, a separate toilet and an abundance of space throughout.

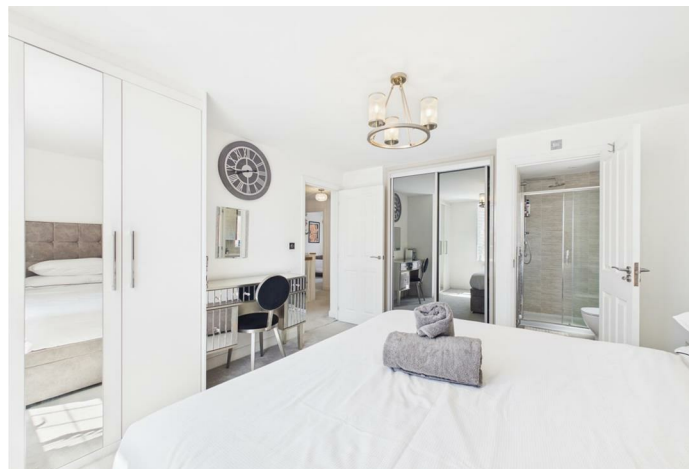
With a landscaped rear garden, driveway and garage for parking with further visitor parking available.

Offered furnished and ready to move into.

Situation

With bus and train links from the development and from Ebbsfleet high speed train station.

Easy access to the A2 and M25 which take you all over London and the South East.



Furnished

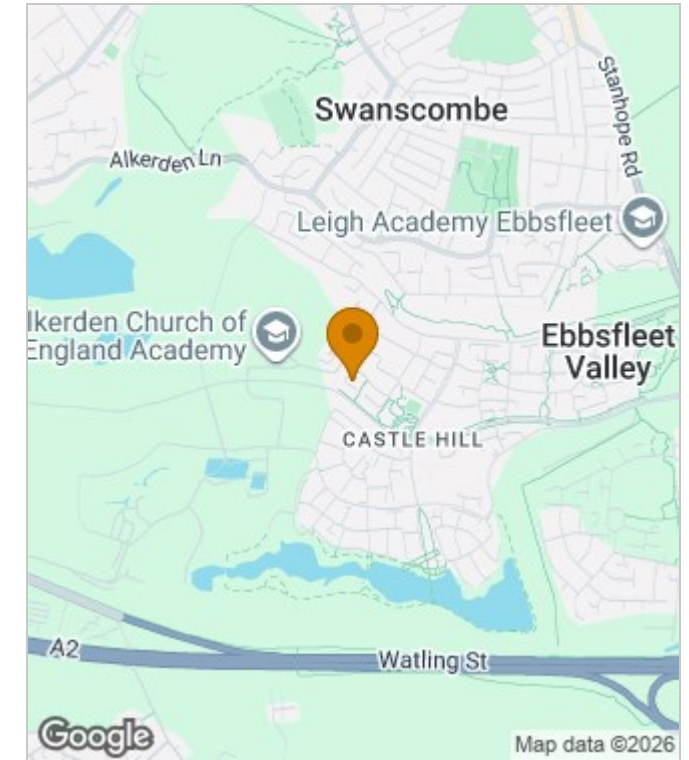
Council Tax Band: F

Available: 2nd May 2026

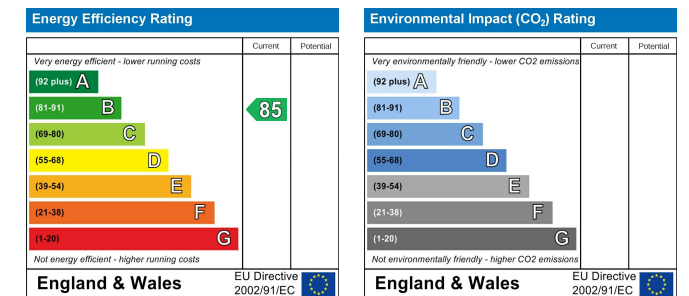
Floor Plans



Area Map



Energy Performance Graph



These particulars, whilst believed to be accurate are set out as a general outline only for guidance and do not constitute any part of an offer or contract. Intending purchasers should not rely on them as statements of representation of fact, but must satisfy themselves by inspection or otherwise as to their accuracy. No person in this firm's employment has the authority to make or give any representation or warranty in respect of the property.